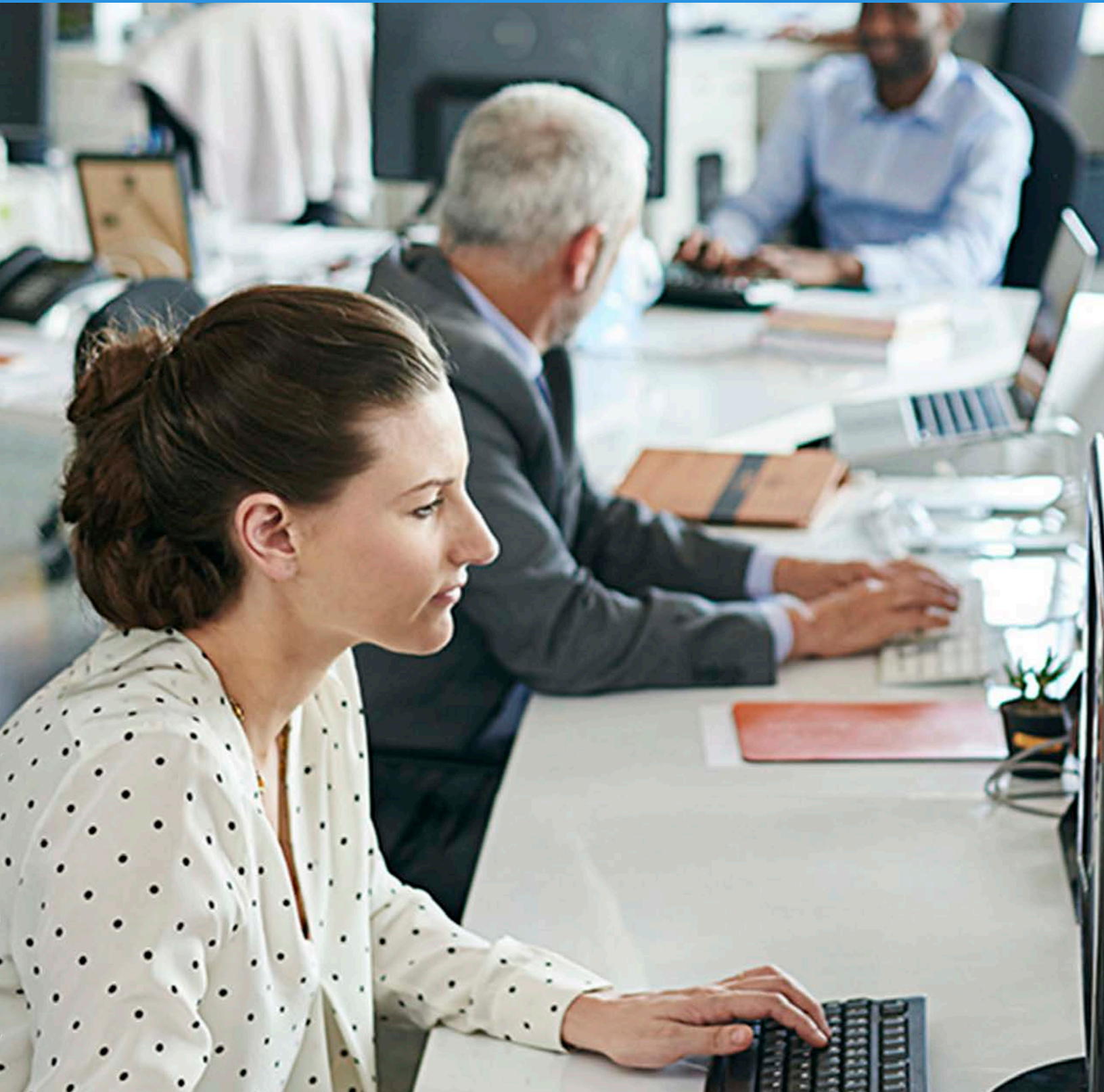




BST11 Bill Configurations



Copyright

BST10®

© 2014 - 2023 BST Consultants, Inc. (dba BST Global). All rights reserved.

This document contains confidential and proprietary information of BST Consultants, Inc.

Confidentiality Statement

No part of this document may be reproduced, duplicated, stored in a retrieval system, or transmitted, in any form or by any means, electronic, mechanical, photocopying, recording, or otherwise, without the prior written permission of BST Consultants, Inc.

Third-Party Copyright

BST Global® and BST11™ are trademarks of BST Consultants, Inc. All other products or company names mentioned are used for identification purposes only and may be trademarks of their respective owners.

Contact Information

5925 Benjamin Center Dr. #110
Tampa, FL 33634

Phone: +1 813.886.3300
+1 800.726.3300

Fax: +1 813.884.8528

Email: Support@BSTGlobal.com

Website: BSTGlobal.com



Table of Contents

BST11 Bill Configurations	5
BKADDENDUM	5
BKBUDGETCATGRP	6
BKDATETYPE	7
BKEXPENSEGROUP	7
BKLABORGRP	8
BKLS	10
BKTRANSDISC	10
BKUNITEXPENSEGRP	11
CVARSTATEMENT	13
CVBILLCOUNT	13
CVBILLDESC	14
CVBILLTERM	14
CVBILLTERMCMNT	15
CVBILLTSKAMTCALC	15
CVCONTRACT	15
CVCURRENCYCODE	16
CVDUEDATE	16
CVFIXEDFEEBASIS	17
CVMSGDATERANGE	17
CVMSGDATETYPE	17
CVFEESUMMARY	18
CVGACALCBASIS	18
CVLBRPRMSEPARATE	18
CVLOGO	19
CVMSGDATERANGE	19
CVPERCENTOFFEE	19
CVPREVBILLINGS	20
CVPROJECTDESC	20
CVREGISTNLABEL	21



CVREMITINFO	21
CVRETAINAGECAL	22
CVSIGNATURE	22
CVSURCHARGEUNIT	22
CVTAXINVOICE	23
CVTAXPOINTDATE	23
CVTODATEPREVIOUS	23
FIXEDFEESUMMRARY	23
LSCALCBASIS	24
MONETARYDECIMALS	24
MULTDECIMALS	24
PERCENTDECIMALS	24
QUANTITYDECIMALS	24
RATEDECIMALS	24
DECIMAL display Samples	25
ZEROEFFORT	26



BST11 Bill Configurations

A bill configuration allows you to define additional options that can be used to customize the Bill report. These options might allow you to add a section, edit groupings, select variable data, add data, select how data displays, add additional calculations, and define decimal precision. These options must be built into the report structure. The bill configurations shown here are included in the BST11 application.

BKADDENDUM

Show a Prebill backup with full detail: No (default).

Project: 132111 - Stewart Soccer Complex		Invoice: Prebill	
**** - Project Coordination			
Rate Labor			
<i>Class</i>	<i>Hours</i>	<i>Rate</i>	<i>Amount</i>
Emeritus Scientist/Engineer	15.00	265.0000	3,975.00
Total Rate Labor			3,975.00
Expenses			
<i>Account</i>	<i>Cost</i>	<i>Multiplier</i>	<i>Amount</i>
Airfare	1,142.86	1.10	1,257.15
Hotel	476.19	1.10	523.81
Meals	257.14	1.10	282.85
Total Expenses			2,063.81
Unit Rate Expenses			
<i>Account</i>	<i>Quantity</i>		<i>Amount</i>
Matrix Field Equipment - Direct	1.00		106.00
Total Unit Rate Expenses			106.00
Total Bill Task: **** - Project Coordination			6,144.81

Show a Prebill backup with full detail: Yes.

Project: 132111 - Stewart Soccer Complex		Invoice: Prebill	
Bill Term: **	Project Manager: Ruth Wooten	Bill Style: LTR	
Bill Routing: Bill Routing 1	Project Director: Gracie Dale	Bill Cycle: 1	
Project Fee: 3,180.00	Bill: Florence Hardy		
**** - Subtask 2.1			
Rate Labor			
<i>Class / Employee</i>	<i>Date</i>	<i>Hours</i>	<i>Rate</i>
Principal Scientist/Engineer			
Dolly Hunter	1/26/2015	5.00	230.0000
Technologist - 3			
Lilly Drake	3/24/2015	2.00	84.0000
Total Rate Labor			1,318.00



BKBUDGETCATGRP

Group backup by Budget Category: No (default).

Project: 132111 - Stewart Soccer Complex		Invoice: Prebill		
**** - Project Coordination				
Rate Labor				
<i>Class</i>		<i>Hours</i>	<i>Rate</i>	<i>Amount</i>
Emeritus Scientist/Engineer		15.00	265.0000	3,975.00
	Total Rate Labor			3,975.00
Expenses				
<i>Account</i>		<i>Cost</i>	<i>Multiplier</i>	<i>Amount</i>
Airfare		1,142.86	1.10	1,257.15
Hotel		476.19	1.10	523.81
Meals		257.14	1.10	282.85
	Total Expenses			2,063.81
Unit Rate Expenses				
<i>Account</i>		<i>Quantity</i>		<i>Amount</i>
Matrix Field Equipment - Direct		1.00		106.00
	Total Unit Rate Expenses			106.00
Total Bill Task: **** - Project Coordination				6,144.81

Group backup by Budget Category: Yes.

Project: 132111 - Stewart Soccer Complex		Invoice: Prebill		
**** - Project Coordination				
Professional Fees				
Rate Labor				
<i>Class</i>		<i>Hours</i>	<i>Rate</i>	<i>Amount</i>
Emeritus Scientist/Engineer		15.00	265.0000	3,975.00
	Total Rate Labor			3,975.00
Total Professional Fees				
				3,975.00
Expense Recovery				
Expenses				
<i>Account</i>		<i>Cost</i>	<i>Multiplier</i>	<i>Amount</i>
Airfare		1,142.86	1.10	1,257.15
Hotel		476.19	1.10	523.81
Meals		257.14	1.10	282.85
	Total Expenses			2,063.81
Unit Rate Expenses				
<i>Account</i>		<i>Quantity</i>		<i>Amount</i>
Matrix Field Equipment - Direct		1.00		106.00
	Total Unit Rate Expenses			106.00
Total Expense Recovery				2,169.81
Total Bill Task: **** - Project Coordination				6,144.81



BKDATETYPE

What Date to use for backup transactions when detail shown: P. (Posting Date - default)

Project: 132111 - Stewart Soccer Complex			Invoice: Prebill	
**** - Project Coordination				
Rate Labor				
<i>Class / Employee</i>	<i>Date</i>	<i>Hours</i>	<i>Rate</i>	<i>Amount</i>
Emeritus Scientist/Engineer				
Jeannette Roberson				
	10/31/2014	5.00	265.0000	1,325.00
	10/31/2014	5.00	265.0000	1,325.00
	10/31/2014	5.00	265.0000	1,325.00
Total Jeannette Roberson		15.00		3,975.00
Total Emeritus Scientist/Engineer		15.00		3,975.00
	Total Rate Labor			3,975.00

What Date to use for backup transactions when detail shown: T. (Transaction Date)

Project: 132111 - Stewart Soccer Complex			Invoice: Prebill	
**** - Project Coordination				
Rate Labor				
<i>Class / Employee</i>	<i>Date</i>	<i>Hours</i>	<i>Rate</i>	<i>Amount</i>
Emeritus Scientist/Engineer				
Jeannette Roberson				
	10/27/2014	5.00	265.0000	1,325.00
	10/28/2014	5.00	265.0000	1,325.00
	10/29/2014	5.00	265.0000	1,325.00
Total Jeannette Roberson		15.00		3,975.00
Total Emeritus Scientist/Engineer		15.00		3,975.00
	Total Rate Labor			3,975.00

BKEXPENSEGROUP

How Expense data is summarized on the backup: Detail. Show detail after grouping by account and Employee/Vendor/Client (default).

Expenses	<i>Doc Number</i>	<i>Date</i>	<i>Cost</i>	<i>Multiplier</i>	<i>Amount</i>
<i>Account / Vendor</i>					
Airfare					
Mattie Lloyd	050190	10/13/2014	1,142.86	1.10	1,257.15
Valeria Bennett	050191	10/20/2014	952.38	1.10	1,047.62
Total Airfare			2,095.24		2,304.77
Hotel					
Mattie Lloyd	050190	10/17/2014	476.19	1.10	523.81
Meals					
Mattie Lloyd					
	050190	10/13/2014	47.62	1.10	52.38
	050190	10/14/2014	57.14	1.10	62.85
	050190	10/15/2014	38.10	1.10	41.91
	050190	10/16/2014	52.38	1.10	57.62
	050190	10/17/2014	61.90	1.10	68.09
Total Mattie Lloyd			257.14		282.85
Total Meals			257.14		282.85
	Total Expenses				3,111.43



How Expense data is summarized on the backup: Acct. Group by Account only.

Expenses Account	Cost	Multiplier	Amount
Airfare	2,095.24	1.10	2,304.76
Hotel	476.19	1.10	523.81
Meals	257.14	1.10	282.85
Total Expenses			3,111.43

How Expense data is summarized on the backup: EVC. Group by Employee/Vendor/Client.

Expenses Vendor	Cost	Multiplier	Amount
Mattie Lloyd	1,876.19	1.10	2,063.81
Valeria Bennett	952.38	1.10	1,047.62
Total Expenses			3,111.43

How Expense data is summarized on the backup: AcctEVC. Group by Account and Employee/Vendor/Client.

Expenses Account / Vendor	Cost	Multiplier	Amount
Airfare			
Mattie Lloyd	1,142.86	1.10	1,257.15
Valeria Bennett	952.38	1.10	1,047.62
Total Airfare	2,095.24		2,304.76
Hotel			
Mattie Lloyd	476.19	1.10	523.81
Meals			
Mattie Lloyd	257.14	1.10	282.85
Total Expenses			3,111.43

BKLABORGRP

How Labor data is summarized on the backup: Detail. Show detail after grouping by Class/Unit and Employee/Vendor/Client (default).

Rate Labor Class / Employee	Date	Hours	Rate	Amount
Emeritus Scientist/Engineer				
Jeannette Roberson	10/27/2014	5.00	265.0000	1,325.00
	10/28/2014	5.00	265.0000	1,325.00
	10/29/2014	5.00	265.0000	1,325.00
Total Jeannette Roberson		15.00		3,975.00
Total Emeritus Scientist/Engineer		15.00		3,975.00
Technologist - 4				
Andre Hays	10/27/2014	2.00	95.0000	190.00
	10/28/2014	2.00	95.0000	190.00
Total Andre Hays		4.00		380.00
Total Technologist - 4		4.00		380.00
Total Rate Labor				4,355.00



How Labor data is summarized on the backup: ClassOrUnit. Group by Class/Unit only.

Rate Labor <i>Class</i>	<i>Hours</i>	<i>Rate</i>	<i>Amount</i>
Emeritus Scientist/Engineer	15.00	265.0000	3,975.00
Technologist - 4	4.00	95.0000	380.00
Total Rate Labor			4,355.00

How Labor data is summarized on the backup: EVC. Group by Employee/Vendor/Client only.

Rate Labor <i>Employee</i>	<i>Hours</i>	<i>Rate</i>	<i>Amount</i>
Andre Hays	4.00	95.0000	380.00
Jeannette Roberson	15.00	265.0000	3,975.00
Total Rate Labor			4,355.00

How Labor data is summarized on the backup: ClassOrUnitEVC. Group by Class/Unit and Employee/Vendor/Client.

Rate Labor <i>Class / Employee</i>	<i>Hours</i>	<i>Rate</i>	<i>Amount</i>
Emeritus Scientist/Engineer Jeannette Roberson	15.00	265.0000	3,975.00
Technologist - 4 Andre Hays	4.00	95.0000	380.00
Total Rate Labor			4,355.00



BKLS

Includes separate Lump Sum backup: No (default)

Includes separate Lump Sum backup: Yes

BKTRANSDISC

Show transaction descriptions on backup page when detail is shown: No (default)

Rate Labor Class / Employee	Date	Hours	Rate	Amount
Emeritus Scientist/Engineer				
Jeannette Roberson				
	10/27/2014	5.00	265.0000	1,325.00
	10/28/2014	5.00	265.0000	1,325.00
	10/29/2014	5.00	265.0000	1,325.00
Total Jeannette Roberson		15.00		3,975.00
Total Emeritus Scientist/Engineer		15.00		3,975.00
Technologist - 4				
Andre Hays				
	10/27/2014	2.00	95.0000	190.00
	10/28/2014	2.00	95.0000	190.00
Total Andre Hays		4.00		380.00
Total Technologist - 4		4.00		380.00
Total Rate Labor				4,355.00

Show transaction descriptions on backup page when detail is shown: Yes.

Rate Labor Class / Employee	Date	Hours	Rate	Amount
Emeritus Scientist/Engineer				
Jeannette Roberson				
	10/27/2014	5.00	265.0000	1,325.00
	Monday work on drilling project			
	10/28/2014	5.00	265.0000	1,325.00
	Tuesday - work on planning			
	10/29/2014	5.00	265.0000	1,325.00
	Travel to Wednesday destination			
Total Jeannette Roberson		15.00		3,975.00
Total Emeritus Scientist/Engineer		15.00		3,975.00
Technologist - 4				
Andre Hays				
	10/27/2014	2.00	95.0000	190.00
	Testing			
	10/28/2014	2.00	95.0000	190.00
	Working on documentation			
Total Andre Hays		4.00		380.00
Total Technologist - 4		4.00		380.00
Total Rate Labor				4,355.00



Note: Must be set to Detail on Transaction Type in order for description to show.



BKUNITEXPENSEGRP

Backup Unit Pricing Expense grouping AcctUnitEVC Group by Account, Unit and Employee/Vendor/Client (default).

Unit Rate Expenses Account / Unit / Vendor	Quantity	Amount
Matrix Field Equipment - Direct Basic/Safety Field Equipment		
Leando Group Inc,	1.00	106.00
Total Unit Rate Expenses		106.00

Backup Unit Pricing Expense grouping: EVC. Group by Employee/Vendor/Client only.

Unit Rate Expenses Vendor	Quantity	Amount
Leando Group Inc,	1.00	106.00
Total Unit Rate Expenses		106.00

Backup Unit Pricing Expense grouping: Acct. Group by Account only.

Unit Rate Expenses Account	Quantity	Amount
Matrix Field Equipment - Direct	1.00	106.00
Total Unit Rate Expenses		106.00

Backup Unit Pricing Expense grouping: AcctUnit: Group by Account and Unit.

Unit Rate Expenses Account / Unit	Quantity	Amount
Matrix Field Equipment - Direct Basic/Safety Field Equipment		
	1.00	106.00
Total Unit Rate Expenses		106.00

Backup Unit Pricing Expense grouping: AcctUnitEquip. Group by Account, Unit and Equipment.

Unit Rate Expenses Account / Unit / Equipment	Quantity	Amount
Equipment - Account		
Truck		
Truck - Equipment	1.00	130.00
Total Equipment - Account		130.00



Backup Unit Pricing Expense grouping: AcctUnitEquipEVC. Group by Account, Unit, Equipment and Employee/Vendor/Client.

Unit Rate Expenses		
<i>Account / Unit / Equipment / Vendor</i>	<u>Quantity</u>	<u>Amount</u>
Equipment - Account		
Truck		
Truck - Equipment		
Leando Group Inc,	1.00	130.00
Total Equipment - Account		130.00

Backup Unit Pricing Expense grouping: AcctUnitEVCDet. Group by Account, Unit, Employee/Vendor/Client and show Detail.

Unit Rate Expenses					
<i>Account / Unit / Vendor</i>	<u>Doc Number</u>	<u>Date</u>	<u>Quantity</u>	<u>Rate</u>	<u>Amount</u>
Matrix Field Equipment - Direct					
Basic/Safety Field Equipment					
Leando Group Inc,	0000037048	10/15/2014	1.00 day(s)	106.0000	106.00
Total Unit Rate Expenses					106.00

Backup Unit Pricing Expense grouping: Detail. Show Detail after grouping by Account and Employee/Vendor/Client.

Unit Rate Expenses					
<i>Account / Unit / Equipment / Vendor</i>	<u>Doc Number</u>	<u>Date</u>	<u>Quantity</u>	<u>Rate</u>	<u>Amount</u>
Matrix Field Equipment - Direct					
ATV					
Leando Group Inc,	0000037048	10/15/2014	5.00 day(s)	165.0000	825.00
Total Unit Rate Expenses					825.00

Backup Unit Pricing Expense grouping UnitEquipEVC. Group by Unit, Equipment, and Employee/Vendor/Client

Unit Rate Expenses		
<i>Unit / Equipment / Vendor</i>	<u>Quantity</u>	<u>Amount</u>
Basic/Safety Field Equipment		
Leando Group Inc,	1.00	106.00
Truck		
Truck - Equipment		
Leando Group Inc,	1.00	130.00
Total Unit Rate Expenses		236.00

Backup Unit Pricing Expense grouping: UnitEVC. Group by Unit and Employee/Vendor/Client.

Unit Rate Expenses		
<i>Unit / Vendor</i>	<u>Quantity</u>	<u>Amount</u>
Basic/Safety Field Equipment		
Leando Group Inc,	1.00	106.00
Total Unit Rate Expenses		106.00



CVARSTATEMENT

Show Accounts Receivable statement on the cover: No (default)

Show Accounts Receivable statement on the cover: Yes.

Outstanding Receivables	Invoice Number	Date	Amount	Balance Due
	0000143103	11/24/2014	1,244.33	1,244.33
	0000143104	11/24/2014	7,963.52	7,963.52
	0000143148	4/8/2015	31,494.65	31,494.65
	0000143168	4/20/2015	10,909.03	10,909.03

CVBILLCOUNT

Show an invoice count on the cover: No (default)

Attention: Tracey Decker Wyandanch Municipality 123 Main Street Calgary, AB T2P 5C5 CANADA	Invoice : Prebill Invoice Date : 7/9/2015 Project : 132111 Project Name : Stewart Soccer Complex Bill Term : ** Tax Point Date : 7/9/2015 Company Registration Goods and Services Tax : 9988776655
<hr/> For Professional Services Rendered Through 7/9/2015	

Show an invoice count on the cover: Yes.

Attention: Tracey Decker Wyandanch Municipality 123 Main Street Calgary, AB T2P 5C5 CANADA	Invoice : Prebill - 16 Invoice Date : 7/9/2015 Project : 132111 Project Name : Stewart Soccer Complex Bill Term : ** Tax Point Date : 7/9/2015 Company Registration Goods and Services Tax : 9988776655
<hr/> For Professional Services Rendered Through 7/9/2015	



CVBILLDESC

Show Bill Descriptions on the cover Yes (default)

Attention: Tracey Decker Wyandanch Municipality 123 Main Street Calgary, AB T2P 5C5 CANADA	Invoice : Prebill Invoice Date : 7/9/2015 Project : 132111 Project Name : Stewart Soccer Complex Bill Term : ** Tax Point Date : 7/9/2015 Company Registration Goods and Services Tax : 9988776655
<hr/>	
For Professional Services Rendered Through 7/9/2015	
Contract : BDP-GroupCtrct Contract Name : BDP Group Contract	
Proposed erection of single-user industrial building and ancillary facilities on Lots....(Boon Lay Planning Area)	
\$26,737,968 @ 0.49% \$131,016	



Note: Descriptions are pulled from the Project / Bill Terms / Bill Description.

Show Bill Descriptions on the cover: No.

CVBILLTERM

Show Bill Term on the cover: No (default)

Show Bill Term on the cover Yes.

Attention: Tracey Decker Wyandanch Municipality 123 Main Street Calgary, AB T2P 5C5 CANADA	Invoice : Prebill Invoice Date : 7/9/2015 Project : 132111 Project Name : Stewart Soccer Complex Bill Term : ** Tax Point Date : 7/9/2015 Company Registration Goods and Services Tax : 9988776655
<hr/>	
For Professional Services Rendered Through 7/9/2015	



CVBILLTERMCMNT

Options to show Bill Term Comments on the cover:

- Don't show on Pre-bill or Final Bill: Never (default).
- Show Bill Term on the Pre-bill cover Prebill.
- Show Bill Term on the Final Bill cover: PrebillFinalBill.

Thornhill, ON L3T 0A1 Canada		Project Name : Mississauga BRT			
For Professional Services Rendered Through 8/21/2017					
Bill Term Comment Field					
	Fee	% Complete	Billings		
			To Date	Previous	Current
WO 321052-600 - Segment 1 Add Description	15,000.00	87.021	13,053.15	13,053.15	0.00
SPA - SPA - Additional Services Add Description	0.00	0.000	0.00	0.00	0.00

CVBILLTASKAMTCALC

What basis will be used for the Current Amount shown by Bill Task?

Current Amount: Calculate Current Amount at the Bill Task level based on the actual effort value or OVRBILLTASKAMT override. Percent Complete column will show value rounded properly using PERCENTDECIMALS Bill Configuration but Percent Completed displayed times Fee may not balance to Current Amount displayed.

Percent Complete: Calculate Current Amount at Bill Task Level based on the Percent Complete value shown on the Invoice either through effort calculation, OVRBILLTASKPCTCOMP override, or OVRBILLTASKAMT override.

CVCONTRACT

Determines if the Bill Term Contract Code, Name, and Contract Date should be shown on the cover of the bill.



Note: This Bill Configuration is currently only available on the CPFF Agency Pool Bill report.

Options include Yes, No, where Yes (default) Shows Contract if one exists on the Bill Term.

If Yes and a Contract does not exist, or set to No, then no captions are displayed.



CVCURRENCYCODE

Show Currency Code on the "Amount Due This Bill" line on the cover: Yes (default)

Current Billings		11,577.43
6% Markup for Misc. Expense		452.10
		<hr/>
		12,029.53
Less Retention		0.00
Tax Amount		601.48
Amount Due This Bill	CAD	<hr/> <hr/> 12,631.01

Show Currency Code on the "Amount Due This Bill" line on the cover: No.

Current Billings		11,577.43
6% Markup for Misc. Expense		452.10
		<hr/>
		12,029.53
Less Retention		0.00
Tax Amount		601.48
Amount Due This Bill		<hr/> <hr/> 12,631.01

CVDUEDATE

Show due date on the cover: No (default)

Show due date on the cover: Yes.

<p>Attention: Tracey Decker Wyandanch Municipality 123 Main Street Calgary, AB T2P 5C5 CANADA</p>	<p>Invoice : FB0000143202 Invoice Date : 7/9/2015 Due Date : 8/8/2015 Project : 132111 Project Name : Stewart Soccer Complex Bill Term : ** Tax Point Date : 7/9/2015 Company Registration Goods and Services Tax : 9988776655</p>
<p>For Professional Services Rendered Through 7/31/2015</p>	



CVFIXEDFEEBASIS

Determines what basis will be used for calculating the fixed fee amount calculation on cover.



Note: This Bill Configuration is currently only available on the CPFF Agency Pool Bill report.

The options for the Fixed Fee Amount calculation:

- D: Direct Salaries
- DO: Direct Salaries and Overhead
- DOE: Direct Salaries, Overhead, and Expenses
- DOES: (default) Direct Salaries, Overhead, Expenses, and Bill Surcharge

CVMSGDATERANGE

Use from and through date in the professional message: From and Through Date.

Do not show the Professional Services Message: Hide Professional Services Message.

Use only through date in the professional message: Through Date Only (default).

CVMSGDATETYPE

Display the posting date as the through date in the Professional Services message on the cover: Posting Date (default).

Display the transaction date as the through date in the Professional Services message on the cover: Transaction Date.



CVFEESUMMARY

Show Fee Summary on Cover: Yes (default) or No

For Professional Services Rendered Through 7/9/2015		Contract: BDP-GroupCtrct		
		Contract Name: BDP Group Contract		
Proposed erection of single-user industrial building and ancillary facilities on Lots....(Boon Lay Planning Area)				
\$26,737,968 @ 0.49% \$131,016				
		Billings		
		To Date	Previous	Current
		18,049.93	0.00	18,049.93
Steward Soccer Complex				
Add Description				
Rate Labor	2,468.00			
Multiplier Labor	2,500.00			
Total Labor	4,968.00			
Expenses	13,081.93			
		Current Billings		18,049.93
		6% Markup for Misc. Expense		298.08
				18,049.93
		Less Retainage	10.00%	1,804.99
				16,244.94
		GST - GST	5.00%	902.50
		Amount Due This Bill		17,147.44
Total Fee :				100,000.00
To Date Billings :				72,434.50
Total Remaining :				27,565.50

CVGACALCBASIS

Determines whether G & A markups will display separately for only Labor or for both Labor and Expense. When Expense is included, this displays G & A as a separate line on the cover and will only display cost values on the backup for Multiplier type expenses.

When Expense is not included, then Other Direct Charges include expense effort and the backup displays effort values.

Options are (L) Labor (default) or (LE) Labor and Expense.

CVLBRPRMSEPARATE

Show Premium Labor costs on a different line than Regular Labor costs: No

Show Premium Labor costs on a different line than Regular Labor costs: Yes (default)



CVLOGO

Show logo in the header of the cover: Yes (default)

Show logo in the header of the cover: No.

CVMSGDATERANGE

How the professional message date range will appear: T. Through Date only (default)

For Professional Services Rendered Through 11/24/2014

How the professional message date range will appear: F. From and Through Date

For Professional Services Rendered For 10/1/2014 Through 11/24/2014



Note: From and Through Dates are pulled from the Prebill Request screen.

CVPERCENTOFFEE

Show % of Fee column on cover: No (default)

Show % of Fee column on cover: Yes

	% of Fee	Fee	% Complete	Billings		
				To Date	Previous	Current
Steward Soccer Complex	100.00%	100,000.00	18.05	18,050.00	0.00	18,050.00
Add Description						



CVPREVBILLINGS

Show previous billings column on the cover.

Options are Yes (default) or No.

	Fee	% Complete	Billings		
			To Date	Previous	Current
Steward Soccer Complex Add Description	100,000.00	18.05	18,050.00	0.00	18,050.00

Show previous billings on the cover: No.

CVPROJECTDESC

Show Project Description on the cover: Yes (default)

For Professional Services Rendered Through 11/24/2014			
Project General Description			
	Billings		
	To Date	Previous	Current
132111 - 13210-506 Talism/3-34 2013 Report			

Show Project Description on the cover: No.

For Professional Services Rendered Through 10/31/2014			
	Billings		
	To Date	Previous	Current
132111 - 13210-506 Talism/3-34 2013 Report			



CVREGISTNLABEL

Show Company and/or Client Registration Labels in header when Value Added Tax:
Both (default)

Both Labels Showing:	
Attention: Alice Novo	Invoice: 00001
Happy Engineers, Inc.	Invoice Date: 7/12/2014
12345 Tampa Drive	Due Date: 8/12/2014
Suite 701	Project: 1-457812
Tampa, FL 33333-1111	Project Name: Tampa Airport Runway
Country	Bill Term: k1
	Tax Point Date: 7/12/2014
Client Registration:	Company Registration:
PAN NO : AADC87858H	GST # : AfkhB3058H
VAT # : 345033457	VAT # : 4355789
For Professional Services Rendered from 10/1/2013 to 10/31/2013	

Show Company and/or Client Registration Labels in header when Value Added Tax:
Client.

Show Company and/or Client Registration Labels in header when Value Added Tax:
Company.

Show Company and/or Client Registration Labels in header when Value Added Tax
None

CVREMITINFO

Show Remittance Information in the footer of the cover: Yes (default)

Edmonton 123 Mainstreet Edmonton, AB T6H 5H6 CANADA

Show Remittance Information in the footer of the cover: No



CVRETAINAGECAL

Calculate tax on the invoice amount after retainage/retention calculation: No (default)

Calculate tax on the invoice amount after retainage/retention calculation: Yes.

CVSIGNATURE

Show Signature Line and Project Managers Name: Yes (default)

Current Billings	11,577.43
6% Markup for Misc. Expense	452.10
	<hr/>
	12,029.53
Less Retention	0.00
Tax Amount	601.48
Amount Due This Bill	<hr/> <hr/>
	12,631.01

Ruth Wooten

Show Signature Line and Project Managers Name: No.

CVSURCHARGEUNIT

Include Unit values (labor and expense) in the Bill Surcharge calculations: Yes (default)

Include Unit values (labor and expense) in the Bill Surcharge calculations: No.



CVTAXINVOICE

Showing "Tax Invoice" in the header on the cover: No (default)

Showing "Tax Invoice" in the header on the cover: Yes.

Showing "This is not a VAT Invoice": NT Name (Not Tax Invoice description)

Tax Invoice	
Talisman Energy Canada 2000, 888 - 3 Street SW Calgary, AB T2P 5C5 CANADA Attention: Luke Donnelly Client Registration: 99999999	Invoice : Prebill Project : 132110 Project Name : scl - Talism/test Invoice Date : 7/8/2014 Tax Point Date : 7/8/2014 Company Registration :

CVTAXPOINTDATE

Will not show the tax point date on the cover: No (default)

Show the Tax Point date on the cover – Yes

CVTODATEPREVIOUS

Will not show the To Date and Previous columns: No.

Show the To Date and Previous columns: Yes (default)

FIXEDFEESUMMARY

Show Fixed Fee Summary page determines if a Fixed Fee summary page should be included after the Cover page. The Fixed Fee Summary is a breakdown of the Fixed Fee Amount calculation.



Note: This Bill Configuration is currently only available on the CPFF Agency Pool Bill report.

Options are Never, Prebill (default), Prebill and Final Bill.



LSCALCBASIS

Use **Effort** as the calculation basis for Lump Sum Fee Types (default)

Use **Revenue** as the calculation basis for Lump Sum Fee Types.



Note: Currently only the *Effort* option is supported by Standard Bill Reports.

Use as the calculation basis for Lump Sum Fee Types (default).

Use as the calculation basis for Lump Sum Fee Types.

MONETARYDECIMALS

The number of decimals for monetary values.

MULTDECIMALS

The number of decimals for multipliers.

PERCENTDECIMALS

This is used when formatting percentages like percent complete.

QUANTITYDECIMALS

The number of decimals for quantity values.

RATEDECIMALS

The number of decimals for rates.



DECIMAL display Samples

Sample of two decimal places.

Project: 132110 - sc1- Talism/test			Invoice: Prebill	
**** - Project Coordination				
Rate Labor				
<i>Class / Employee</i>	<i>Date</i>	<i>Hours</i>	<i>Rate</i>	<i>Amount</i>
Emeritus Scientist/Engineer				
Jeanette Sather				
	6/30/2014	10.00	265.00	2,650.00
	6/30/2014	10.00	265.00	2,650.00
	6/30/2014	10.00	265.00	2,650.00
	6/30/2014	10.00	265.00	2,650.00
	6/30/2014	10.00	265.00	2,650.00
Total Jeanette Sather		50.00		13,250.00
Total Emeritus Scientist/Engineer		50.00		13,250.00
Total Rate Labor				13,250.00
Expenses				
<i>Vendor</i>			<i>Cost</i>	<i>Multiplier</i>
Jeanette Sather			547.62	1.10
Karen Condon			1,142.86	1.10
Total Expenses				1,859.53
Unit Rate Expenses				
<i>Account / Unit / Vendor</i>		<i>Quantity</i>		<i>Amount</i>
Matrix Field Equipment - Direct				
ATV				
Kreg Alde		5.00		825.00
Sub Contractors				
Computer Aided Design System II				
Brent Forrest		5.00		500.00
Total Unit Rate Expenses				1,325.00
Total Bill Task: **** - Project Coordination				16,434.53
Total Project: 132110 - sc1- Talism/test				16,434.53



Sample of three decimal places.

Project: 132110 - sc1- Talism/test			Invoice: Prebill	
**** - Project Coordination				
Rate Labor				
<i>Class / Employee</i>	<i>Date</i>	<i>Hours</i>	<i>Rate</i>	<i>Amount</i>
Emeritus Scientist/Engineer				
Jeanette Sather	6/30/2014	10.000	265.0000	2,650.000
	6/30/2014	10.000	265.0000	2,650.000
	6/30/2014	10.000	265.0000	2,650.000
	6/30/2014	10.000	265.0000	2,650.000
	6/30/2014	10.000	265.0000	2,650.000
Total Jeanette Sather		50.000		13,250.000
Total Emeritus Scientist/Engineer		50.000		13,250.000
	Total Rate Labor			13,250.000
Expenses				
<i>Vendor</i>			<i>Cost</i>	<i>Multiplier</i>
Jeanette Sather			547.620	1.1000
Karen Condon			1,142.860	1.1000
	Total Expenses			1,859.528
Unit Rate Expenses				
<i>Account / Unit / Vendor</i>		<i>Quantity</i>		<i>Amount</i>
Matrix Field Equipment - Direct				
ATV				
Kreg Alde		5.000		825.000
Sub Contractors				
Computer Aided Design System II				
Brent Forrest		5.000		500.000
	Total Unit Rate Expenses			1,325.000
Total Bill Task: **** - Project Coordination				16,434.528
Total Project: 132110 - sc1- Talism/test				16,434.528

ZEROEFFORT

Include zero effort transactions on Bill Report: Determines if the Labor, Expense, and Unit Backup details should be shown on the backup and included in the calculations on the report cover.



Note: This Bill Configuration is currently only available on the CPFF Agency Pool Bill report.

Options are Yes (default) or No.



Note: This looks at the bill item effort when the transaction processed.